

BATA INDUSTRIALS FOOTWEAR CATALOGUE



BATA INDUSTRIALS
THE SAFETY BOOT

SAFETY
ALWAYS
COMES
FIRST
RIGHT?



BATA INDUSTRIALS
THE SAFETY BOOT



DEAR FEET,

Companies often say "The safety of our workers always comes first".

But does it really? I'm sure it's their intention, but is it a fact?

It will not come as a surprise that we, Bata Industrials, want safety to be a fact.

Whether it is in a plant, distribution centre, production site, factory, or any other place where professionals might encounter hazardous working conditions. Because no matter how skilled people might be, they are always vulnerable.

We can decrease that vulnerability and turn it into safety. By making professionals stand strong, be comfortable, walk with confidence, and stay safe under all circumstances.

That does not start with just a safety boot. That starts with The Safety Boot and we have a catalogue full of them.

Stay Safe

Martijn Mathot
Global President

SERIOUSLY.

MANUFACTURING IN AUSTRALIA SINCE 1961

Our History

Founded in 1894, The Bata Shoe Organization is one of the world's leading manufacturers and retailers of quality footwear. With over 30,000 employees, 24 production facilities, 5,000 international retail stores and a presence in over 70 countries.

The company was first registered in the town of Zlin Czechoslovakia, from humble beginnings the small family business expanded rapidly under the vision and guidance of founder Thomas Bata. Thomas was a ninth generation shoemaker determined to become a manufacturer who could provide customers with value for their money.

Bata became an international business in the first half of the 20th century and by the second half of the century had established a true global footprint (production in Australia had commenced in 1961). A progressive and market leading pioneer of the modern footwear industry Bata is now an iconic brand recognised all around the world.

Bata Industrials In Australia

Bata Shoe Company Pty Ltd was established in Australia 1961. Production commenced in Mornington, Victoria in 1981, and remains our Head Office location today. The Australian company is registered as a quality endorsed company complying with ISO 9001 and AS 2210.3 and is proud to be part of the world wide organization. With a strong industrial focus, the company manufactures and wholesales over a million pairs of footwear each year through its industrial and wholesale retail business streams.

A working relationship between Bata Australia and European industrial companies was the platform for the development of an association between the specialised industrial companies within the organization. In 2004 the first meeting of the Bata Industrials World Wide Group was held at Bata Best in the Netherlands. Involving companies from South America, South Africa, Europe, Australia and New Zealand, the enormous potential for the group to synergize information, product development, manufacturing and sourcing became apparent. The combined technical and R&D resources of the group have lead to a cross pollination of ideas and the capacity for product development has never been stronger. This is epitomized by the development and re-structuring of the Bata Industrials ranges in Australia between 2005 and 2007.

THE SAFETY BOOT



Contents

Australian Story	4
Features Glossary	6-7
Avenger (Mens & Ladies)	8-11
Helix Ultra	12-15
Naturals	16-17
Naturals Rubber (Mens)	18-19
Naturals Rubber (Ladies)	20-21
Emergency Services	22-23
Sportmates	24-25
Mates	26-27
Australian made	28-29
PVC Recycle Program	30-31
Safety Gumboots	32
Non Safety Gumboots	33
Accessories	34
Comfort Guarantee	35
Manufacturers Warranty	35
Range Index	36-37
Size Chart	37
Find Your Boot	38
The Safety Standards	39



FOOTWEAR FEATURE ICONS

Use the symbols displayed on this page to see each boot's performance characteristics. By referring to these icons as you read through this catalogue, you'll see the special features for each different style of boot. Use this information to help determine which Bata Industrials style is suitable to your needs. You will also notice that many of our boots cater for specialised industry specific requirements. Please read the product descriptions closely or visit us online at www.bataindustrials.com.au for more information.

COMFORT FEATURES



PU COMFORT FOOTBED

For increased underfoot cushioning performance.



ORTHOLITE INSOLE

Provides superior cushioning, unmatched comfort, breathability and durability.



BLOOM INSOLE

High performance algae-based foam insoles that offer a sustainable replacement to traditional petroleum based insole materials.



COOL COMFORT LINING

Premium comfort lining provides a soft and breathable boot interior to keep your feet dry and cool.



DRI-FREEZE LINING

A performance fabric designed to manage the moisture and breathability within the boot environment, keeping the foot surface cool, dry and comfortable.



RECOIL ENERGY RETURN TECHNOLOGY®

Innovative cushioning technology made from super elastic material that is extremely lightweight and durable.



BASF ELASTOPAN MIDSOLE

Soft cushioned midsole that generates outstanding comfort and is super lightweight.



LIGHTWEIGHT MIDSOLE

Soft cushioned midsole that generates outstanding comfort and is super lightweight.



D3O® IMPACT PROTECTION

For enhanced comfort & impact absorption to help soften the weight of working on your feet all day.



FLEXIBLE MIDSOLE

A soft cushioned midsole providing comfort, flexibility and a high level impact absorption.

PROTECTION FEATURES



STEEL TOECAP

Steel toe cap offers protection against injuries and can withstand a force of up to 200 joules.



ALLOY TOECAP

Lightweight toe cap offers protection against injuries and can withstand a force of up to 200 joules.



COMPOSITE TOECAP

Non metal toe cap offers protection against injuries and can withstand a force of up to 200 joules.



CARBON FIBRE TOECAP

Super lightweight toe cap offers protection against injuries and can withstand a force of up to 200 joules.



STEEL MIDSOLE

Protects the foot against sharp objects penetrating through the sole.



COMPOSITE MIDSOLE

Non metal midsole that protects the foot against sharp objects penetrating through the sole.



SCUFF CAP PROTECTION

For added toe scuff and abrasion protection to prolong the life of the boot.



ELECTRIC HAZARD PROTECTION

Designed to significantly minimise the flow of electricity to the ground, reducing the possibility of electrocution.



ANTISTATIC

Minimises the amount of static electricity build-up on your body.



METATARSAL PROTECTION

The Met-Guard provides a protective barrier to reduce and absorb impact, whilst supporting natural foot movement.



ANKLE PROTECTION

High impact absorbing guard to protect the ankle from side impact.

SPECIAL FEATURES



3M™ SCOTCHGARD™ PROTECTOR

Added leather protection from oil and water and also makes cleaning easier.



3M™ THINSULATE™ INSULATION

Fine microfibers help trap air and block body radiant heat loss, making it an efficient insulator.



KEVLAR STITCHING

Sewing thread that is made from heat and fire retardant meta-aramid fiber.



METAL FREE

Made with composite components and a great choice for workers where metal detection is present.



AIRPORT FRIENDLY

Ideal for travelling through metal detection portals and airport security.



LADIES FITTING

Designed specifically to fit a ladies foot. Available only in ladies sizes.



NON SAFETY

Boot with no safety toe cap, and is a great option for when not restricted to wearing safety footwear.



LIFE ODOUR CONTROL LINING

Natural plant-based antimicrobial protection that eliminates 99% of bacteria that causes bad smell.

SOLE FEATURES



SLIP RESISTANT

Tested to meet the Australian/New Zealand standard for slip resistance.



TUNNEL SYSTEM®

This design ensures that the shoe will absorb shock from impact, thus relieving pressure on your joints.



DURABLE HEAT RESISTANT PU OUTSOLE

Resistant to fuel, oil, abrasion & heat up to 130°C.



DURABLE HEAT RESISTANT TPU OUTSOLE

Resistant to fuel, oil, abrasion & heat up to 130°C.



HEAT RESISTANT RUBBER OUTSOLE

Durable rubber outsole can withstand extremely high temperatures of up to 300°C.



FUEL & OIL RESISTANT OUTSOLE

Outsole is resistant to fuel & oil substances.



SHOCK ABSORBING DISC

Shock absorbing technology fused within the heel strike zone for increased impact protection.

BOOT UPPER FEATURES



LEATHER UPPER

High quality leather for added safety and durability.



ABRASION RESISTANT MESH UPPER

Featuring a breathable mesh upper that is also abrasion resistant to help prolong the life of the shoe.



MICROFIBER UPPER

Water resistant and easy to clean with a leather look finish.



WATER RESISTANT

Resistant to water penetrating the inside of the boot.



ZIP SIDED

Allows you to quickly slip in and out of your boots without having to stop and use the laces.

AVENGER THE SUPER BOOT.

Introducing Avenger, the latest advancement in workboot innovation. Fusing style, safety and athletic cushioning into a super lightweight & metal free heavy industrial workboot. Its packed full of features to provide superior all round comfort and foot protection.

The secret to the Avenger's superior comfort levels is in it's Recoil ERT® midsole. Made from hundreds of expanded beads fused together to deliver the wearer endless rebound energy, outperforming any other cushioning material in the safety industry.

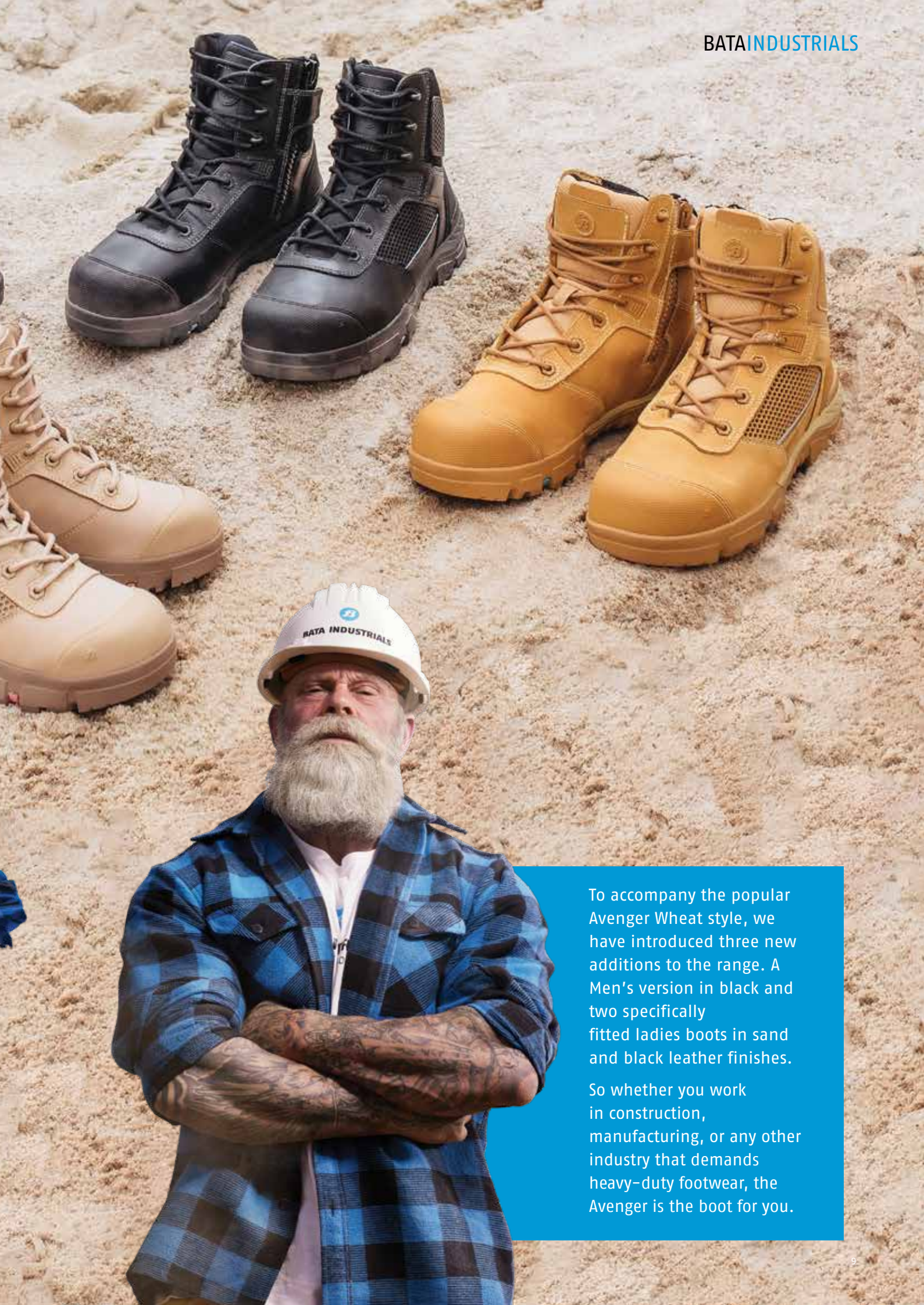
With all over foot protection such as; carbon fibre toecap, TPU toe scuff, D30 ankle and metatarsal impact protection, Armour Layer anti-penetration midsole and EH protection you can understand why it is known as **THE SUPER BOOT.**

AVAILABLE NOW

Mens available in Wheat and Black from sizes UK 3-14 (Half 7½-10½).

Womens available in Sand and Black from sizes US 5-11.





To accompany the popular Avenger Wheat style, we have introduced three new additions to the range. A Men's version in black and two specifically fitted ladies boots in sand and black leather finishes.

So whether you work in construction, manufacturing, or any other industry that demands heavy-duty footwear, the Avenger is the boot for you.

AVENGER

DUAL DENSITY RECOIL ERT/RUBBER

Standard Certification

AS 2210.3:2019 SB P WRU M
FO AN E HRO SRC
ASTM F2413-18 EH PR

3M™ Scotchgard™ Protector

Premium leather uppers with added leather protection from oil and water and also makes cleaning easier.



D30 Metatarsal & Ankle Protection

Provides a protective barrier to protect the metatarsal and ankle areas from high impact.



Carbon Fibre Safety Toecap

Super lightweight toe cap offers protection against injuries and can withstand a force of up to 200 joules.



Toe Scuff Protection

For added toe scuff and abrasion protection to prolong the life of the boot.



Encapsulated Rubber Outsole

Designed to meet the slip, fuel, oil, abrasion & heat resistant to 300°C standard AS 2210.3.



Kevlar Stitching

Heat and fire retardant stitching that helps prolong the life of the boot.



Dri-Freeze Lining

A performance fabric designed to manage the moisture and breathability within the boot environment, keeping the foot surface cool, dry and comfortable.



Life Odour Control Lining

Natural plant-based antimicrobial protection that eliminates 99% of bacteria that causes bad smell.



Zip Sided

Allows you to quickly slip in and out of your boots without having to stop and use the laces.



Ortholite® Insole

Provides superior cushioning, unmatched comfort, breathability and durability.



Armour Layer Anti-Penetration

Super lightweight non-metal midsole that protects the foot against sharp objects penetrating through the sole.



Recoil Energy Return Technology®

Advanced energy return cushioning encapsulated within the midsole to provide endless comfort.



Electric Hazard Protection

Designed to significantly minimise the flow electricity to the ground, reducing the possibility of electrocution.



High Quality Leather Upper

High quality leather uppers for added safety and durability



For more technical info, visit www.bataindustrials.com.au to download the data spec sheet.



OUTSOLE TECHNOLOGY



ORTHOLITE® INSOLES

Provides superior cushioning, unmatched comfort, breathability and durability. Also eco-friendly containing 5% recycled rubber.



RECOIL ENERGY RETURN TECHNOLOGY®

Innovative cushioning technology made from super elastic material that is extremely lightweight and durable.



HEAT RESISTANT RUBBER OUTSOLE

Hard wearing rubber outsole provides superior grip and abrasion resistance. Heat resistant to temperatures up to 300°C.



360° ENCAPSULATED RUBBER OUTSOLE

The Recoil ERT midsole is fully encapsulated within a rubber outsole to enhance the longevity of the boot and withstand harsh working conditions.



FUEL & OIL RESISTANT

Is resistant to fuel & oil substances.



SLIP RESISTANT

Tested to meet the Australian standard for slip resistance AS 2210.3:2019 SRC.



ELECTRIC HAZARD PROTECTION

Designed to significantly minimise the flow of electricity to the ground, reducing the possibility of electrocution.



TUNNEL SYSTEM®

The Helix sole design includes an enhanced concave in the heel to increase comfort and reduce strain related injury and fatigue, dissipating heel-strike impact forces.

AVENGER 804 88830

Wheat Zip Sided Safety Boot

- › Carbon fibre safety toe
- › Wheat nubuck leather upper
- › External TPU scuff toe cap
- › YKK zip side for ease of access
- › Metatarsal & ankle protection
- › Anti-penetration resistant
- › EH resistant
- › Heat resistant rubber outsole to 300°C
- › Sizes: UK 3-14 (Half Sizes 7½-10½)



AVENGER 804-66031

Black Zip Sided Safety Boot

- › Carbon fibre safety toe
- › Black full grain leather upper
- › External TPU scuff toe cap
- › YKK zip side for ease of access
- › Metatarsal & ankle protection
- › Anti-penetration resistant
- › EH resistant
- › Heat resistant rubber outsole to 300°C
- › Sizes: UK 3-14 (Half Sizes 7½-10½)



AVENGER 504-88011

Sand Zip Sided Safety Boot

- › Carbon fibre safety toe
- › Sand nubuck leather upper
- › External TPU scuff toe cap
- › YKK zip side for ease of access
- › Metatarsal & ankle protection
- › Anti-penetration resistant
- › EH resistant
- › Heat resistant rubber outsole to 300°C
- › Sizes: US 5-11 (Ladies)



AVENGER 504-66012

Black Zip Sided Safety Boot

- › Carbon fibre safety toe
- › Black full grain leather upper
- › External TPU scuff toe cap
- › YKK zip side for ease of access
- › Metatarsal & ankle protection
- › Anti-penetration resistant
- › EH resistant
- › Heat resistant rubber outsole to 300°C
- › Sizes: US 5-11 (Ladies)



6 MONTH
MANUFACTURERS
WARRANTY

Bata Industrial's entire range is warrantied for six (6) months from the date of purchase against defective workmanship and or materials when used under normal conditions for the purpose intended for the particular boot.

30 DAY
COMFORT
GUARANTEE

Try a pair of Avenger Boots and if you're not completely satisfied with the comfort, simply return the boots to the place of purchase within 30 days of the date of purchase for an exchange or refund.

RECOIL ERT®

ENERGY RETURN TECHNOLOGY

BETTER FOR YOUR FEET

The wearer's feet remain less tired, which improves foot health and increases energy levels.

MAXIMUM RESPONSE

Recoil ERT® stays durably elastic and always bounces back into its original shape.

SUPREME EFFICIENCY

Recoil ERT® provides a high level of energy absorption with every step.

MAXIMUM RESISTANCE

Recoil ERT® is encapsulated by a durable rubber outsole layer, making it ideal for the toughest work environments.

ENDLESS CUSHIONING

The outstanding cushioning characteristics of Recoil ERT® help prevent soreness or injury to the wearer's feet, ankles, joints, lower limbs and back.

SUPERIOR BOUNCE

RECOIL ERT® returns a lot more energy and drive to the wearer than the conventional midsole materials used.



Recoil ERT®

Recoil provides more energy return than any other foam cushioning material in the market.

EVA Foam

Even the best performing EVA cushioning returns less energy than Recoil ERT cushioning.

PU

PU cushioning returns even less energy than Recoil ERT cushioning.



RAISING YOUR COMFORT STANDARDS

HELIX ULTRA COLLECTION

Bata Industrials Helix range has evolved, by improving key elements and partnering with highly regarded brands to bring you the best boot in its class. Bata is always striving for innovation and the refined modifications of this new collection is ultra impressive. Now 15% lighter due to its enhanced comfort and durability upgrades it's hard to see why you would wear anything else.

Featuring;

SOLES
BY



■ • BASF

We create chemistry

Kevlar.



D3O[®]

Life
Natural

ARMOURLAYER[®]
PENETRATION RESISTANT MIDSOLE



PROTECTED BY
D3O®

HELIX ULTRA

DUAL DENSITY PU/RUBBER

Standard Certification

AS 2210.3:2019 SRC

ASTM F2413-18 EH Resistant

Cool Comfort Lining

Premium comfort lining provides soft and breathable boot interior to keep your feet dry and cool.



3M™ Scotchgard™ Protector

Premium leather uppers with added leather protection from oil and water and also makes cleaning easier.



Steel Safety Toecap

Capable of resisting a drop force of 200 Joules to offer premium protection for your toes.

*Longreach Zip features Composite Toecap



Toe Scuff Protection

For added toe scuff and abrasion protection to prolong the life of the boot.



Michelin Rubber Outsole

Designed to meet the slip, fuel, oil, abrasion & heat resistant to 300°C standard AS 2210.3.



Life Odour Control Lining

Natural plant-based antimicrobial protection that eliminates 99% of bacteria that causes bad smell.



Kevlar Stitching

Heat and fire retardant stitching that helps prolong the life of the boot.



PU Comfort Footbed

For increased cushioning performance.



BASF Elastopan® Midsole

Soft cushioned midsole that generates outstanding comfort and is super lightweight.



D30® Heel Cushion Insert

Receives a wave of initial impact and displaces the shockwaves and channels the energy to encourage movement.

*Only featured in Horizon & Longreach models



Armour Layer Anti-Penetration

Super lightweight non-metal midsole that protects the foot against sharp objects penetrating through the sole.

*Only featured in Longreach Zip models



Electric Hazard Protection

Designed to significantly minimise the flow electricity to the ground, reducing the possibility of electrocution.



High Quality Leather Upper

High quality leather uppers for added safety and durability



For more technical info, visit www.bataindustrials.com.au to download the data spec sheet.

SOLES BY



OUTSOLE TECHNOLOGY



PREMIUM COMFORT INSOLES

Each boot is fitted with a premium PU comfort insole to increase underfoot cushioning and support.



BASF ELASTOPAN PU MIDSOLE

Lightweight, flexible & soft cushioned PU (Polyurethane) midsole provides superior comfort and a high level of impact absorption.



MICHELIN RUBBER OUTSOLE

Hard wearing rubber outsole provides superior grip and abrasion resistance. Heat resistant to temperatures up to 300°C.



D30 IMPACT PROTECTION

Advanced technology insert placed within the heel of the midsole to dramatically increase the amount of shock absorption on impact. *Only available in Horizon & Longreach lace models.



SLIP, FUEL & OIL RESISTANT

Tested to meet the Australian standard for slip resistance AS 2210.3:2019 FO SRC and is resistant to fuel & oil substances.



ARMOUR LAYER ANTI-PENETRATION MIDSOLE

Super lightweight non-metal midsole that protects the foot against sharp objects penetrating through the sole. *Only featured in the wheat & black Longreach Zip models.



ELECTRIC HAZARD PROTECTION

Designed to significantly minimise the flow of electricity to the ground, reducing the possibility of electrocution.



TUNNEL SYSTEM®

The Helix sole design includes an enhanced concave in the heel to increase comfort and reduce strain related injury and fatigue, dissipating heel-strike impact forces.





804 88008

HORIZON

Zip Sided Safety Boot

Sizes UK 3-14 (Half Sizes 7½-10½)
Colour Wheat Nubuck Leather 804 88008
Sole PU/Rubber



804 88015

LONGREACH ZIP

6" Composite Zip Sided Safety Boot

Sizes UK 3-14 (Half Sizes 7½-10½)
Colour Wheat Nubuck Leather 804 88015
Sole PU/Rubber

*Does not include D30 Heel Insert.



804 66029

LONGREACH ZIP

6" Composite Zip Sided Safety Boot

Sizes UK 3-14 (Half Sizes 7½-10½)
Colour Black Full Grain Leather 804 66029
Sole PU/Rubber

*Does not include D30 Heel Insert.



804 44021

TREKKER

Claret Slip On Safety Boot

Sizes UK 3-14 (Half Sizes 7½-10½)
Colour Claret Full Grain Safety 804 44021
Sole PU/Rubber

*Does not include D30 Heel Insert.



804 88009

LONGREACH

6" Lace Up Safety Boot

Sizes UK 3-14 (Half Sizes 7½-10½)
Colour Wheat Nubuck Leather 804 88009
Sole PU/Rubber



804 66010

LONGREACH

6" Lace Up Safety Boot

Sizes UK 3-14 (Half Sizes 7½-10½)
Colour Black Full Grain Leather 804 66010
Sole PU/Rubber



6 MONTH
MANUFACTURERS
WARRANTY

Bata Industrial's entire range is warrantied for six (6) months from the date of purchase against defective workmanship and or materials when used under normal conditions for the purpose intended for the particular boot.

30 DAY
COMFORT
GUARANTEE

Try a pair of Helix Ultra Boots and if you're not completely satisfied with the comfort, simply return the boots to the place of purchase within 30 days of the date of purchase for an exchange or refund.

COMFORT TECHNOLOGY

The Helix Ultra's comfort system is comprised of three layers: A soft cushioned PU footbed, BASF Elastopan® midsole, and Michelin Rubber outsole. These three layers work together to provide superior energy return, comfort and grip.

3. OUTSOLE

MICHELIN RUBBER

Improved Grip & Stability

- > Slip, abrasion, heat, fuel & oil resistant
- > Self cleaning tread pattern
- > Heavy duty rubber compound for superior grip
- > Tread pattern was inspired by the Michelin Crossgrip rubber tyre



1



2



3

1. INSOLE

SERIOUSLY CUSHIONED

- > PU insole provides all day comfort, cushioning and stability.
- > Breathable and moisture absorbing
- > Arch support
- > Added heel and forefoot shock absorption zones

2. MIDSOLE

BASF ELASTOPAN® Lightweight & Comfort

- > Lightweight & supportive
- > Ultra high rebound cushioning
- > High flexibility and ergonomic properties
- > Abrasion and hydrolysis resistance
- > Fuel and oil resistant
- > Strong durability & low density

NATURALS

DUAL DENSITY PU/PU

Standard Certification

AS 2210.3:2019 SRA

High Quality Leather Upper

High quality leather uppers for added safety and durability



Steel Safety Toecap

Capable of resisting a drop force of 200 Joules to offer premium protection for your toes.



Durable PU Outsole

Resistant to fuel, oil, abrasion & heat up to 130°C.



Life Odour Control Lining

Natural plant-based antimicrobial protection that eliminates 99% of bacteria that causes bad smell.



PU Comfort Footbed

For increased cushioning performance.



Tunnel System

Concave design in the heel of the outsole that absorbs shock from impact, thus relieving pressure on the joints.



Antistatic Protection

Minimises the amount of static electricity build up on your body.



For more technical info, visit www.bataindustrials.com.au to download the data spec sheet.

OUTSOLE TECHNOLOGY



PU COMFORT INSOLE

The Naturals polyurethane footbed provides superior softness, shock absorption and arch support for increased underfoot cushioning performance.



SOFT CUSHIONED PU MIDSOLE

Lightweight, flexible & soft cushioned PU (Polyurethane) midsole provides superior comfort and a high level of impact absorption.



DURABLE HEAT RESISTANT PU OUTSOLE

Durable PU (Polyurethane) outsole that is resistant to oil, acid, abrasion & heat up to 130°C.



ANTISTATIC

Designed to minimise the amount of static electricity build up on your body.



FUEL & OIL RESISTANT

Is resistant to fuel & oil substances.



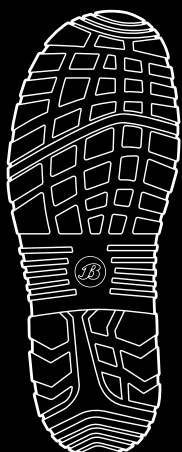
SLIP RESISTANT

Tested to meet the Australian standard for slip resistance AS 2210.3:2019 SRA.



TUNNEL SYSTEM®

The naturals sole design includes an enhanced concave in the heel to increase comfort and reduce strain related injury and fatigue, dissipating heel-strike impact forces.





804 88841

ZIPPY**Zip Sided Safety Boot****Sizes** UK 2-13 (Half Sizes 6½-10½)**Colour** Wheat Nubuck Leather 804 88841**Sole** PU/PU

706 80510

TITAN**Lace Up Safety Boot****Sizes** UK 3-13 (Half Sizes 6½-10½)**Colour** Wheat Nubuck Leather 706 80510**Sole** PU/PU

705 60510

SATURN**Lace Up Safety Boot****Sizes** UK 2-13 (Half Sizes 6½-10½)**Colour** Black Smooth Leather 705 60510**Sole** PU/PU

804 66641

ZIPPY**Zip Sided Safety Boot****Sizes** UK 2-13 (Half Sizes 6½-10½)**Colour** Black Leather 804-66641**Sole** PU/PU

703 80514

MERCURY**Slip On Safety Boot****Sizes** UK 3-13 (Half Sizes 6½-10½)**Colour** Sand Suede Leather 703 80514**Sole** PU/PU

705 60514

**HERCULES****Slip On Safety Boot****Sizes** Black UK 2-13 (Half Sizes 6½-10½)

White UK 3-13 (Half Sizes 9½)

Black Rambler Leather 705 60514

White Microfibre 805 11514

Sole PU/PUHercules White
805 11514 only

Bata Industrial's entire range is warrantied for six (6) months from the date of purchase against defective workmanship and or materials when used under normal conditions for the purpose intended for the particular boot.

**Anti-static Protection**

The Naturals boots are conductive safety workboots. This means they are designed to prevent a build-up of static electrical charges in the human body by sending these charges to the ground, preventing a sudden flow of electricity between electrically charged objects caused by contact.

**Tunnel System®**

Bata Industrials Naturals collection has evolved, featuring an updated sole design and premium styling. The new sole design includes an enhanced tunnel system to increase comfort and reduce strain-related injury and fatigue. The tunnel system is a lightweight concave heel cushioning system that dissipates heel-strike impact forces.

**Life Natural Odour Control Lining**

Life Natural is green technology that uses the bacteria-fighting power of plants to control perspiration odours. It replaces current odour control chemicals with natural peppermint oil while offering the same performance and durability. It eliminates 99% of bad odour causing bacteria giving 100% long lasting natural anti-microbial protection and freshness.

**Food Grade Safety Boot**

The Hercules white elastic sided boot has been designed for the food industry. Its water-resistant microfibre upper easily wipes clean, breathable lining keeps your feet dry and comfortable and it has excellent slip resistance underfoot. A Dual density polyurethane sole resists oils, fats, acids and grease, and added toe protection with a steel toe cap that is capable to resist up to 200 joules of force.

NATURALS RUBBER

DUAL DENSITY PU/RUBBER

Standard Certification

AS 2210.3:2019 SRC

ASTM F2413-18 EH Resistant



For more technical info, visit www.bataindustrials.com.au to download the data spec sheet.

OUTSOLE TECHNOLOGY



PU COMFORT INSOLE

The Naturals polyurethane footbed provides superior softness, shock absorption and arch support for increased underfoot cushioning performance.



SOFT CUSHIONED PU MIDSOLE

Lightweight, flexible & soft cushioned PU (Polyurethane) midsole provides superior comfort and a high level of impact absorption.



HEAT RESISTANT RUBBER OUTSOLE

Hard wearing rubber outsole provides superior grip and abrasion resistance. Heat resistant to temperatures up to 300°C.



ELECTRIC HAZARD PROTECTION

Designed to significantly minimise the flow of electricity to the ground, reducing the possibility of electrocution.



FUEL & OIL RESISTANT

Is resistant to fuel & oil substances.



SLIP RESISTANT

Tested to meet the Australian standard for slip resistance AS 2210.3:2019 SRC.



TUNNEL SYSTEM®

The naturals sole design includes an enhanced concave in the heel to increase comfort and reduce strain related injury and fatigue, dissipating heel-strike impact forces.



DEFENDER ZIP 804 80851

Wheat Zip Sided Safety Boot

- › Steel safety toe
- › Wheat nubuck leather upper
- › External TPU scuff toe cap
- › YKK zip side for ease of access
- › EH resistant
- › Heat resistant rubber outsole to 300°C
- › Sizes: UK 5-13 (Half Sizes 6½-10½)



Bata Industrial's entire range is warrantied for six (6) months from the date of purchase against defective workmanship and or materials when used under normal conditions for the purpose intended for the particular boot.



Electrical Hazard Protection

The entire surface of Electrical hazard (EH) rated safety boots are made from non-conductive materials and as a result no electrical charge will pass through the body, because you are fully isolated from the ground. So this provides a secondary source of protection for you from electric shocks or electrocution.



Tunnel System®

Bata Industrials Naturals collection has evolved, featuring an updated sole design and premium styling. The new sole design includes an enhanced tunnel system to increase comfort and reduce strain-related injury and fatigue. The tunnel system is a lightweight concave heel cushioning system that dissipates heel-strike impact forces.



Life Natural Odour Control Lining

Life Natural is green technology that uses the bacteria-fighting power of plants to control perspiration odours. It replaces current odour control chemicals with natural peppermint oil while offering the same performance and durability. It eliminates 99% of bad odour causing bacteria giving 100% long lasting natural anti-microbial protection and freshness.

NATURALS RUBBER

DUAL DENSITY PU/RUBBER

Standard Certification

AS 2210.3:2019 SRC

ASTM F2413-18 EH Resistant



For more technical info, visit www.bataindustrials.com.au to download the data spec sheet.

OUTSOLE TECHNOLOGY



PU COMFORT INSOLE

The Ladies polyurethane footbed provides superior softness, shock absorption and arch support for increased underfoot cushioning performance.



SOFT CUSHIONED PU MIDSOLE

Lightweight, flexible & soft cushioned PU (Polyurethane) midsole provides superior comfort and a high level of impact absorption.



HEAT RESISTANT RUBBER OUTSOLE

Hard wearing rubber outsole provides superior grip and abrasion resistance. Heat resistant to temperatures up to 300°C.



TUNNEL SYSTEM®

The Ladies sole design includes an enhanced concave in the heel to increase comfort and reduce strain related injury and fatigue, dissipating heel-strike impact forces.



FUEL & OIL RESISTANT

Is resistant to fuel & oil substances.



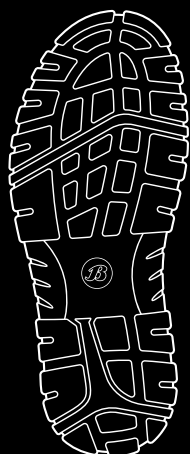
SLIP RESISTANT

Tested to meet the Australian standard for slip resistance AS 2210.3:2019 SRC.



ELECTRIC HAZARD PROTECTION

Designed to significantly minimise the flow of electricity to the ground, reducing the possibility of electrocution.





DAKOTA 504 88017 Wheat Zip Sided Safety Boot

- › Steel safety toe
- › Wheat nubuck leather upper
- › External TPU scuff toe cap
- › Zip side for ease of access
- › EH resistant
- › Heat resistant rubber outsole to 300°C
- › Sizes: 5-11 (Ladies)



6 MONTH
MANUFACTURERS
WARRANTY

Bata Industrial's entire range is warrantied for six (6) months from the date of purchase against defective workmanship and or materials when used under normal conditions for the purpose intended for the particular boot.

30 DAY
COMFORT
GUARANTEE

Try a pair of Dakota Boots and if you're not completely satisfied with the comfort, simply return the boots to the place of purchase within 30 days of the date of purchase for an exchange or refund.



Electrical Hazard Protection

The entire surface of Electrical hazard (EH) rated safety boots are made from non-conductive materials and as a result no electrical charge will pass through the body, because you are fully isolated from the ground. So this provides a secondary source of protection for you from electric shocks or electrocution.



Tunnel System®

Bata Industrials Naturals collection has evolved, featuring an updated sole design and premium styling. The new sole design includes an enhanced tunnel system to increase comfort and reduce strain-related injury and fatigue. The tunnel system is a lightweight concave heel cushioning system that dissipates heel-strike impact forces.



Life Natural Odour Control Lining

Life Natural is green technology that uses the bacteria-fighting power of plants to control perspiration odours. It replaces current odour control chemicals with natural peppermint oil while offering the same performance and durability. It eliminates 99% of bad odour causing bacteria giving 100% long lasting natural anti-microbial protection and freshness.

EMERGENCY SERVICES

DUAL DENSITY PU/RUBBER

Standard Certification

AS 2210.3:2019 OB E FO AN WRU SRC CI(sole) HI(sole)
 HRO-350° Outsole HRO-120° Midsole
 ASTM F2413-18 EH Resistant
 Abrasion Resistant-Satra TM 163:1996

Water Resistant Upper
 Resistant to water penetrating the inside of the boot.



D30® Ankle Protection
 Provides a protective barrier to protect the ankle area from high impact.



High Quality Leather Upper
 Full grain leather upper for added safety and durability



Durable Rubber Outsole
 Designed to meet the slip, fuel, oil, abrasion & heat resistant to 350°C standard AS 2210.3.



Dri-Freeze Lining

A performance fabric designed to manage the moisture and breathability within the boot environment, keeping the foot surface cool, dry and comfortable.



Zip Sided

Allows you to quickly slip in and out of your boots without having to stop and use the laces.



Ortholite® Insole

Provides superior cushioning, unmatched comfort, breathability and durability.



Energy Absorption Midsole

Lightweight, flexible & high rebound PU midsole provides superior comfort and impact absorption.



Electric Hazard Protection

Designed to significantly minimise the flow electricity to the ground, reducing the possibility of electrocution.



For more technical info, visit www.bataindustrials.com.au to download the data spec sheet.

OUTSOLE TECHNOLOGY



ORTHOLITE® INSOLES

Provides superior cushioning, unmatched comfort, breathability and durability. Also eco-friendly containing 5% recycled rubber.



ENERGY ABSORPTION PU MIDSOLE

Lightweight, flexible, soft cushioned & high rebound PU (Polyurethane) midsole provides superior comfort and a high level of impact absorption.



HEAT RESISTANT RUBBER OUTSOLE

Hard wearing rubber outsole provides superior grip and abrasion resistance. Heat resistant to temperatures up to 350°C.



ELECTRIC HAZARD PROTECTION

Designed to significantly minimise the flow of electricity to the ground, reducing the possibility of electrocution.



FUEL & OIL RESISTANT

Is resistant to fuel & oil substances.



SLIP RESISTANT

Tested to meet the Australian standard for slip resistance AS 2210.3:2019 SRC.





SENTINEL 804 60416 Black Zip Sided Response Boot

- › Black full grain leather/canvas upper
- › D30® ankle impact protection
- › YKK zip side for ease of access
- › Ortholite® Insole
- › EH resistant
- › Heat resistant rubber outsole to 350°C
- › Sizes: UK 3-14 (Half Sizes 6½-9½)



Bata Industrial's entire range is warrantied for six (6) months from the date of purchase against defective workmanship and or materials when used under normal conditions for the purpose intended for the particular boot.



Electrical Hazard Protection

The entire surface of Electrical hazard (EH) rated safety boots are made from non-conductive materials and as a result no electrical charge will pass through the body, because you are fully isolated from the ground. So this provides a secondary source of protection for you from electric shocks or electrocution.



D30® Impact Protection

Nothing protects better than D30®. D30® material offers the most advanced protection against impact. It protects the heel by providing long term cushioning and shock resistance reducing foot, leg and lower back fatigue. This means that the harder the impact, the greater the protection to the force.



Ortholite® Insole

With extraordinarily low resiliency and high density, ortholite® foam deadens impact forces before they're transferred to the body. It's unrivaled energy absorption makes it the perfect choice where comfort is priority and stability is essential. Ortholite® foam insoles deliver superior confidence and under-foot protection, enhancing safety while reducing fatigue.

SPORTSMATES

DUAL DENSITY EVA/RUBBER

Standard Certification

AS 2210.3:2019 SB E FO SRC

Abrasion Resistant Mesh Upper

Featuring a breathable mesh upper that is also abrasion resistant to help prolong the life of the shoe.



Safety Toecap

Safety toe cap offers protection against injuries and can withstand a drop force of up to 200 joules.



Toe Scuff Protection

For added toe scuff and abrasion protection to prolong the life of the boot.



Durable Rubber Outsole

Abrasion & slip resistant.



Padded Tongue & Collar

Added foam around the ankle area to provide better support, stability and comfort.



PU Foam Footbed

Breathable PU foam moulded footbed provide soft cushioning for everyday use.



Shock Absorbing Disc

Shock absorbing technology fused within the heel strike zone for increased impact protection.



Lightweight EVA Midsole

Soft cushioned midsole that generates outstanding comfort and is super lightweight. Features a shock absorbing disc insert in the heel to help reduce shock on the lower limbs.



For more technical info, visit www.bataindustrials.com.au to download the data spec sheet.

OUTSOLE TECHNOLOGY



PU FOAM INSOLES

Breathable PU foam moulded footbed provide soft cushioning for everyday use.



EVA CUSHIONED MIDSOLE

Soft cushioned midsole that generates outstanding comfort and is super lightweight.



DURABLE RUBBER OUTSOLE

Durable rubber outsole that is resistant to oil, fuel, abrasion & Slippery surfaces.



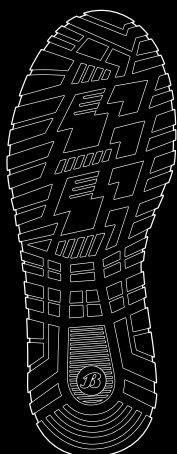
FUEL & OIL RESISTANT

Is resistant to fuel & oil substances.



SLIP RESISTANT

Tested to meet the Australian standard for slip resistance AS 2210.3:2019 SRC.





CHARGER 801 66017 Black Lace Up Safety Jogger

- › Safety toecap
- › Abrasion resistant mesh upper
- › Lightweight EVA cushioned midsole
- › Shock absorbing heel disc insert
- › PU foam footbed
- › Slip resistant rubber outsole
- › Sizes: UK 3-13 (Full Sizes Only)

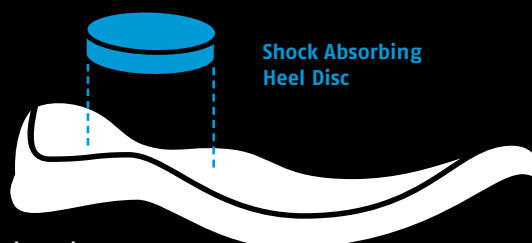


Bata Industrial's entire range is warrantied for six (6) months from the date of purchase against defective workmanship and or materials when used under normal conditions for the purpose intended for the particular boot.

COMFORT TECHNOLOGY

The new sportmates collection features a high rebound energy cushioned midsole made from an EVA compound that is super flexible & lightweight.

Fused within the heel of the midsole is a shock absorbing heel disc which generates stable cushioning across the heel, thus effectively reducing the impact of movement and providing a higher level of comfort. By combining the two materials together the sportmates range can help reduce impact strain to the lower leg, back, ankle, knee and hip joints.



**High Rebound
Cushioning Midsole**

MATES

DUAL DENSITY PU/PU

Standard Certification

AS 2210.3:2019

High Quality Leather Upper

High quality leather uppers for added safety and durability



Steel Safety Toecap

Capable of resisting a drop force of 200 Joules to offer premium protection for your toes.



Comfort Footbed

For increased cushioning performance.



Tunnel System

Concave design in the heel of the outsole that absorbs shock from impact, thus relieving pressure on the joints.

Durable PU Outsole

Resistant to oil, acid, abrasion & heat up to 130°C.



For more technical info, visit www.bataindustrials.com.au to download the data spec sheet.

OUTSOLE TECHNOLOGY



PU COMFORT INSOLE

Molded PU footbed provides superior softness, shock absorption and arch support for increased underfoot cushioning performance.



FLEXIBLE PU MIDSOLE

Lightweight, flexible & soft cushioned PU (Polyurethane) midsole which provides superior comfort and a high level of impact absorption.



DURABLE HEAT RESISTANT PU OUTSOLE

Durable PU (Polyurethane) outsole that is resistant to oil, acid, abrasion & heat up to 130°C.



FUEL & OIL RESISTANT

Is resistant to oil & acid substances.



SLIP RESISTANT

Tested to meet the Australian standard for slip resistance AS 2210.3:2019 SRA.



TUNNEL SYSTEM®

The sole design includes an enhanced concave in the heel to increase comfort and reduce strain related injury and fatigue, dissipating heel-strike impact forces.



JOBMATE 805 00605**Black Slip On Safety Boot**

- › Steel safety toe
- › Black rambler leather upper
- › Heavy Duty Woven pull tabs
- › Dual density PU/PU outsole
- › Heat resistant outsole to 130°C
- › Sizes: UK 5-13 (Full Sizes Only)

**BUSHMAN 805 44405****Claret Slip On Non-Safety Boot**

- › Non safety
- › Claret Full grain leather upper
- › Heavy Duty Woven pull tabs
- › Dual density PU/PU outsole
- › Heat resistant outsole to 130°C
- › Sizes: UK 4-12 (Half sizes 7½-10½)



Bata Industrial's entire range is warranted for six (6) months from the date of purchase against defective workmanship and or materials when used under normal conditions for the purpose intended for the particular boot.

**Dual Density Sole**

This boot features a dual density polyurethane sole providing a combination of lightweight cushioning within the midsole and a durable abrasion resistance tread.

**Tunnel System®**

Bata Industrials Mates sole design includes an enhanced tunnel system to increase comfort and reduce strain-related injury and fatigue. The tunnel system is a lightweight concave heel cushioning system that dissipates heel-strike impact forces.

**Steel Safety Toecap**

The Jobmate is fitted with a certified steel toe cap capable of resisting a drop force of 200 joules to offer premium protection for your toes.



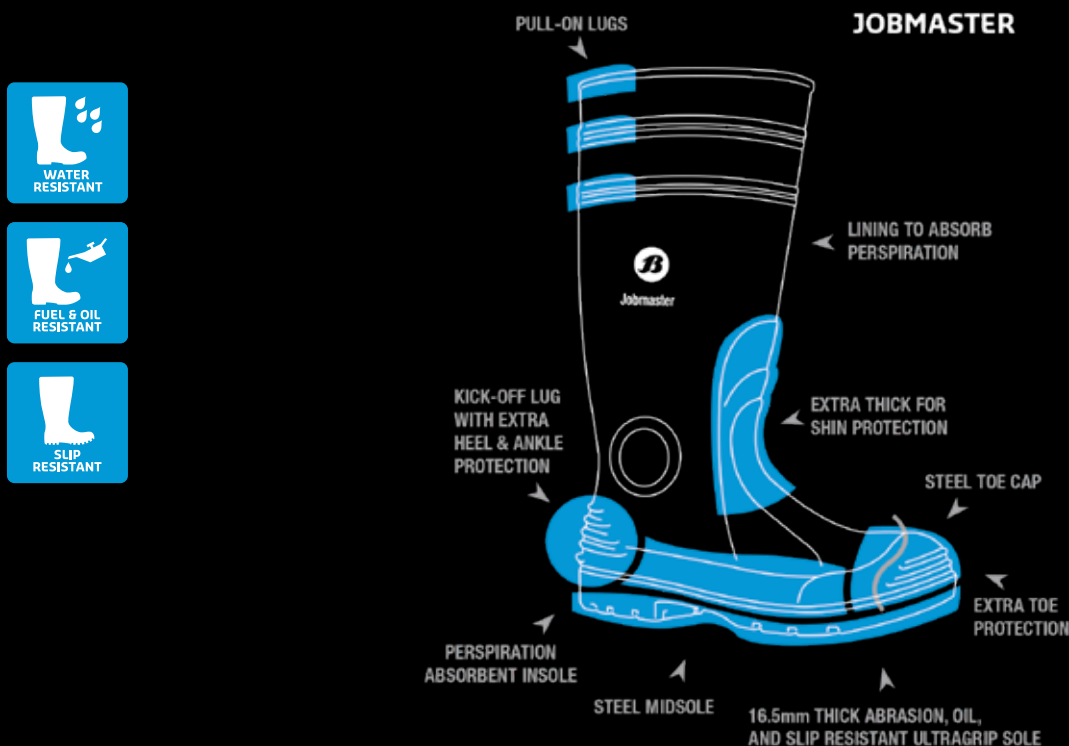
AUSTRALIAN MADE PVC GUMBOOTS

Bata gumboots are proudly manufactured at our Mornington, Victoria factory and have been worn by Australians for decades. Whether for general use in the yard or garden or simply when it's wet and wild outside, Bata gumboots will keep you dry, safe and comfortable.

Bata Utility gumboots are synonymous with Australian industry and are widely used across a variety of applications. The Utility design is a favourite in the workplace. It is reinforced at the heel, ankle and shin and is both durable and flexible. Channelling in the sole allows for improved liquid dispersal and slip resistance.

Our Jobmaster II gumboots are used widely throughout food processing and associated industries. With a specification well suited to fisheries, meat and poultry processing. Jobmaster II gumboots are made from PVC that has been specifically formulated for the correct work application. Fully lined with reinforced uppers and a slip resistant sole design Jobmaster II gumboots provide great comfort for the longest of shifts.

With a revolutionary new sole design that is durable and fuel & oil resistant Jobmaster III provides surety under foot and excellent multi directional slip resistance. Comfortable for the longest shifts, Jobmaster III is destined to become a firm favourite across Australian industry, just like its hard working and hard wearing predecessors.



Recommended for use in the following industries;





100% RECYCLABLE

BOOT	ARTICLE NO.	INDUSTRY							
INDUSTRY SUITABLE FOR		AGRICULTURE	LANDSCAPING	CONSTRUCTION	FISHERY	MINING	FOOD & BEVERAGES	FRESH PRODUCE PROCESSING	LIVESTOCK FARMING
SAFETY GUMBOOTS									
Utility Black/Blue	892 69092	•	•	•			•	•	
Utility Black/Red	892 65190		•	•		•	•	•	
Utility White	892 11090	•			•		•	•	
Jobmaster II Green/Orange	892 75192	•							
Jobmaster II White/Gum	892 10095	•			•		•	•	•
Jobmaster II Green/Gum	892 73095	•							•
Jobmaster III Grey/Grey	892 22292	•	•	•		•			
Jobmaster III Black/Grey	892 62290	•	•	•		•			•
NON SAFETY GUMBOOTS									
Jobmaster II White/Gum	892 13180	•			•		•	•	•
Jobmaster II Green/Gum	892 73180				•		•	•	•
Jobmaster III Black/Green	892 67280	•	•		•				•
Utility Black	892 66380		•						•
Utility Green	892 77080	•			•			•	•
Utility White	892 11080	•			•			•	•
Handyman 400mm	892 60079	•	•		•			•	
Handyman 300mm	892 60069	•	•		•			•	



For more technical info,
visit www.bataindustrials.com.au
to download the data spec sheet.

TAKE A STEP TO REDUCING YOUR CARBON FOOTPRINT

Each year, Australia produces more than 53.7 million tonnes of rubbish of which 22 million tonnes reach landfills. Each Australian produces an average 2.1kg of waste every day, which is the second highest in the world.

So thanks to our consumerist habits we are generating more waste than we can get rid of in an environmentally friendly way. That is why Bata Australia has made a conscious effort to reduce waste generation through recycling and reusing PVC content in our gumboot production process. So by using recycled content not only do we reduce the amount of waste reaching landfill but we are also helping to reduce our carbon footprint.



WHAT IS THE PVC RECYCLE PROGRAM?

The PVC Recycle program is an initiative of the Bata Shoe Company of Australia to help reduce the amount of worn PVC gumboots being disposed of into landfill. Bata's aim is to re-process this waste into the raw materials to create brand new Bata PVC gumboots and help save the planet. Our main objective is to have zero used/worn PVC gumboots being disposed into landfill and to help our customers responsibly dispose of their used boots we are working to setup easy to use recycle disposal bins nation wide in collaboration with our current distributors.

At Bata we see the value in offering competitive production whilst still taking into consideration the materials we use.

That's why we've opted for a circular economy. A circular economy is an alternative to a traditional linear economy (make, use, dispose) in which we keep resources in use for as long as possible, extract the maximum value from them whilst in use, then recover and regenerate products and materials at the end of each service life.



SUSTAINABLE PRODUCT MANUFACTURING

Each year Approx 200,000 pairs will be made from 50% recycled PVC content.



REDUCING CARBON EMISSIONS

For each kilo of recycled PVC 2 kilos of CO₂ emissions has been saved.



2021 AWARD WINNER

Product Stewardship
Centre of Excellence.



WHY SHOULD YOU RECYCLE YOUR PVC GUMBOOTS?

With the PVC Gumboot Recycling program, individuals and companies can also contribute to the health of our environment. Recycling PVC is quite easy, with a number of businesses across Australia and New Zealand already participating. Recycling PVC can also be cheaper than disposing directly to regular waste. Recycling PVC instead of putting it into waste bins can lead to positive environmental outcomes and may reduce the costs of waste management.



5 STAGES OF PVC RECYCLING

In order for PVC waste to be recycled, it needs to go through five different stages so that it can become used in the reproduction of PVC Gumboots.



Collection

Bata will place a collection bin on your premises. Once this bin has been filled it will be sent to the recycling centre to be processed.



Sorting

The gumboots are then sorted and non PVC materials are separated from the boot. This is necessary so that the PVC can be processed accordingly in further stages.



Granulated

The boots are then processed through a granulating machine that shreds the PVC into small pellets.



Processing

The PVC pellets are then reprocessed with an added plasticizer to create a new compound that is approximately made of 50% or more of recycled content.



Re-Manufacture

Bata then uses the recycled PVC material in its injection moulding machines to produce brand new black gumboots ready for use.

SAFETY GUMBOOTS



UTILITY

400mm PVC Safety Gumboot

Sizes UK 5-12
Colour Black/Red 892 65190 (Size 13 avail)
 White/White 892 11090
Sole PVC



UTILITY

400mm PVC Safety Gumboot

Sizes UK 5-13
Colour Black/Blue 892 69092
Sole PVC



JOBMASTER II

400mm PVC Safety Gumboot

Sizes UK 4-14
Colour Green/Gum 400mm 892 73095
 White/Gum 400mm 892 10095
Sole PVC



JOBMASTER III

400mm PVC Safety Gumboot

Sizes UK 4-14
Colour Grey/Grey 892 22292
 Black/Grey 892 62290
Sole PVC



Grey/Grey 892 22292 only



JOBMASTER II

400mm PVC Safety Gumboot

Sizes UK 4-14
Colour Green/Orange 892 75192
Sole PVC



JOBMASTER PU

400mm PU Safety Gumboot

Sizes UK 4-14
Colour White/Grey 892 11021
Sole PU



NON SAFETY GUMBOOTS

GUMBOOT COMMON FEATURES



WATER RESISTANT

Resistant to water penetrating the inside of the gumboot.



FUEL & OIL RESISTANT UPPER

Upper is resistant to fuel & oil substances.



SLIP RESISTANT

Tested & certified to meet the Australian standard for slip resistance.



892 13180

JOBMASTER II 400mm

400mm PVC Gumboot

Sizes UK 4-14
Colour White/Gum 892 13180
Sole PVC



892 73180

JOBMASTER II 400mm

400mm PVC Gumboot

Sizes UK 4-14
Colour Green/Gum 892 73180
Sole PVC



892 67280

JOBMASTER III

300/400mm PVC Gumboot

Sizes UK 4-14
Colour Black/Green 400mm 892 67280
Sole PVC



892 66380

892 11080

UTILITY

400mm PVC Gumboot

Sizes UK 5-12
Colour Black/Black 892 66380 (Size 13 Avail)
White/White 892 11080
Sole PVC



892 60079

892 60069

HANDYMAN

300/400mm PVC Gumboot

Sizes UK 5-13
Colour Black/Black 400mm 892 60079
Black/Black 300mm 892 60069
Sole PVC



BLOOM

Our new **Bloom foam insoles** are made from a sustainable algae-based material that helps to remove harmful algae and reverse the effects of water pollution and rising global temperatures by restoring healthy ecosystems and generating clean water.

The Bloom insole provides a sustainable alternative to non-renewable petroleum-based foams. So with one insole, we are cleaning 7 litres of water and 4 cubic metres of air.

7

Litres of clean water returned to the habitat



4

M³ of air cleaned



eco-facts



For more technical info, visit www.bataindustrials.com.au to download the data spec sheet.

ACCESSORIES

890 20000



890 40000



890 80000



COMFORT INSOLES

Air Cushioned EVA Insoles

Sizes UK 3-5, 6-8, 9-11, 12-14
Colour White 890 20000
Sole EVA

SERIOUSLY CUSHIONED INSOLES

Shock Absorption PU Insoles

Sizes UK 3-5, 6-8, 9-11, 12-14
Article 890 40000
Sole PU

Designed for enhanced cushioning, these PU insoles are soft, breathable, washable and shock absorbent.

SERIOUSLY SUPPORTIVE INSOLES

Supportive Insoles

Sizes UK 3-5, 6-8, 9-11, 12-14
Article 890 80000
Sole PU

Give your feet some extra support with these PU insoles, designed to keep you feet in alignment as they fatigue during the day.

890 91000



890 92000



890 50003

890 90001



890 20002

WORK SOCKS 3 PACK

Multicolour Crew Sock

Sizes Medium UK 3-9, Large UK 10-14
Colour Bright Colour Pack 890 91000
Fabric Cotton/Polyester/Elastane/Nylon

WORK SOCKS 3 PACK

Multicolour Crew Sock

Sizes Medium UK 3-9, Large UK 10-14
Colour Dark Colour Pack 890 92000
Fabric Cotton/Polyester/Elastane/Nylon

SOCK PROTECTORS

Overboot Sock Protectors

Sizes One size fits all
Colour Orange Hi-Vis 890 50003
 Navy 890 90001
 Khaki 890 20002
Fabric Polyester/Cotton

WORKBOOT LACES PAIR

Replacement Laces

Sizes Small 130cm, Large 160cm
Colour Wheat 890 83502
 Black 890 62502
Spec Ultimate Tensile Strength of 921N.



130cm Length suitable for midcut boots (5 eyelets)

160cm Length suitable for highcut boots (6 eyelets)

30 DAY COMFORT GUARANTEE

Purchase any pair of **Bata Industrials** boots from the **Avenger**, **Helix Ultra** or **Ladies** range and if you're not completely satisfied with the comfort, simply return the boots to the place of purchase within 30 days of the date of purchase for an exchange or refund.

To make a claim under this guarantee, you must return the purchased footwear at your own cost to the place of purchase. Along with your original receipt within 30 days from the date of purchase. Provided the footwear is not damaged or misused you may choose between a full refund or an exchange up to the original purchase price of the footwear as set out on the purchase receipt.

6 MONTH MANUFACTURERS WARRANTY

Bata Industrial's entire range is warrantied for six (6) months from the date of purchase against defective workmanship and/or materials when used under normal conditions for the purpose intended for the particular boot.

The warranty will become void by the discretion of Bata Industrials if the product has been misused or subjected to excessive wear and tear including exposure to chemicals, cement, lime or heat if the footwear has not been designed for these environments.

To claim the purchaser must return the footwear and provide proof of purchase to the place of purchase. The footwear will then be returned to Bata Industrials for inspection. If found defective the footwear will either be repaired and returned where possible, otherwise a replacement pair will be provided by Bata Industrials.



RANGE INDEX

ZIP SIDED BOOTS

AVENGER WHEAT
804 88830
Pg 11



AVENGER BLACK
804 66031
Pg 11



AVENGER LADIES SAND
504 88011
Pg 11



AVENGER LADIES BLACK
504 66012
Pg 11



HORIZON
804 88008
Pg 15



LONGREACH ZIP WHEAT
804 88015
Pg 15



LONGREACH ZIP BLACK
804 66029
Pg 15



DEFENDER ZIP
804 80851
Pg 19



DAKOTA
504 88017
Pg 21



ZIPPY WHEAT
804 88841
Pg 17



ZIPPY BLACK
804 66641
Pg 17



SENTINEL
804 60416
Pg 23



LACE UP BOOTS

LONGREACH WHEAT
804 88009
Pg 15



LONGREACH BLACK
804 66010
Pg 15



SATURN BLACK
705 60510
Pg 17



TITAN WHEAT
706 80510
Pg 17



ELASTIC SIDED BOOTS

TREKKER SC
804 44021
Pg 15



MERCURY
703 80514
Pg 17



HERCULES BLACK
705 60514
Pg 17



HERCULES WHITE
805 11514
Pg 17



BUSHMAN
805 44405
Pg 27



JOBMATE
805 00605
Pg 27



CHARGER
801 66017
Pg 25



SAFETY JOGGER

PVC SAFETY GUMBOOTS



UTILITY
892 69092
Pg 32



UTILITY
892 65190
Pg 32



UTILITY
892 11090
Pg 32



JOBMASTER III
892 62290
Pg 32



JOBMASTER III
892 22292
Pg 32



JOBMASTER II
892 73095
Pg 32



JOBMASTER II
892 10095
Pg 32



JOBMASTER II
892 75192
Pg 32

PVC NON SAFETY GUMBOOTS



UTILITY
892 11080
Pg 33



UTILITY
892 66380
Pg 33



JOBMASTER II
892 73180
Pg 33



JOBMASTER PU
892 11021
Pg 32



JOBMASTER III
892 67280
Pg 33



HANDYMAN
892 60079
Pg 33



HANDYMAN
892 60069
Pg 33



JOBMASTER II
892 13180
Pg 33

BATA INDUSTRIALS SIZE CONVERSION CHART

MENS UK/AUS	2	3	4	5	6	6½	7	7½	8	8½	9	9½	10	10½	11	12	13	14
MENS US	3	4	5	6	7	7½	8	8½	9	9½	10	10½	11		12	13	14	15
EUROPE	35	36	37	38	39	40	41	41.5	42	42.5	43	44	45	45.5	46	47	48	49
WOMENS US	4	5	6	7	8		9		10		11							
LENGTH (MM)	226	234	243	251	259		268	276	276	285	285	289	293	302	302	310	319	327

FIND YOUR BOOT

BOOT	PAGE	PROTECTION FEATURES					SOLE	UPPER FEATURES				
------	------	---------------------	--	--	--	--	------	----------------	--	--	--	--



AVENGER COLLECTION												
Avenger	11			•		•	•	•			•	•
Avenger Ladies	11			•		•	•	•			•	•
HELIUM COLLECTION												
Horizon	15	•				•	•				•	•
Longreach Zip	15		•			•	•	•			•	•
Longreach	15	•				•	•				•	•
Trekker	15	•				•	•				•	•
NATURALS COLLECTION												
Zippy	17	•				•		•			•	•
Titan	17	•						•			•	•
Saturn	17	•						•			•	•
Mercury	17	•						•			•	•
Hercules Black	17	•						•			•	•
Hercules White	17	•						•			•	•
Defender Zip	19	•				•	•				•	•
LADIES COLLECTION												
Dakota	21	•				•	•				•	•
EMERGENCY SERVICES COLLECTION												
Sentinel	23							•			•	•
SPORTMATES COLLECTION												
Charger	25	•				•					•	•
MATES COLLECTION												
Jobmate	27	•						•			•	•
Bushman	27							•	•	•		•
PVC SAFETY GUMBOOT COLLECTION												
Utility 89211090	32	•					•				•	•
Utility 89265190	32	•					•				•	•
Utility 89269092	32	•		•			•				•	•
Jobmaster 2	32	•					•				•	•
Jobmaster 3	32	•					•				•	•
Jobmaster 3 89222292	32	•		•			•				•	•
Jobmaster PU	32	•						•			•	•
PVC NON-SAFETY GUMBOOT COLLECTION												
Utility	33							•			•	•
Jobmaster 2	33							•			•	•
Jobmaster 3	33							•			•	•
Handyman	33							•			•	•

THE SAFETY STANDARD

If a boot carries a safety standard label, this indicates the following; The product meets the requirements of Australian Regulation regarding personal protective equipment. The safety standard AS 2210 consists of two parts, The basis label means that a product meets a number of basic requirements. If the product also meets certain additional requirements, this is indicated by a symbol on the boot.

EXPLANATION OF THE SYMBOLS

- SB** Protective footwear for professional use with toecaps designed to give protection against impact when tested at an energy level of 200 joules
- S1** As SB plus antistatic properties, energy absorption of seat region, closed heel and resistance to fuel/oil
- S1P** As S1 plus anti penetration resistant insert
- S2** As S1 plus water resistance and water absorption of upper material
- S3** As S2 plus anti penetration resistant insert and cleated outsole
- S4** All-rubber or all-polymer footwear, antistatic properties, energy absorption of seat region, protective toecap, closed heel and resistance to fuel/oil
- S5** As S4 plus anti penetration resistant insert and cleated outsole

Additional requirements for special applications with specific marks:

P	Penetration resistance	HI	Insulation against heat	HRO	Heat Resistant Outsole
C	Conductive	CI	Insulation against cold	SBH	Hybrid footwear
A	Antistatic	CR	Cut resistant footwear	ESD	Electrostatic discharge
E	Energy absorption	AN	Ankle protection	SRA/	Slip resistance
I	Insulating footwear	WR	Water resistant footwear	SRB/SRC	
M	Metatarsal protection 100 J impact energy	WRU	Water resistant upper		
		FRU	Flame resistant upper		

CAREFULLY READ THESE INSTRUCTIONS BEFORE USING THIS PRODUCT: This footwear is designed to minimize the risk of injury from the specific hazards as identified by the marking on the particular product (see marking codes above). However, always remember that no item of PPE can provide full protection and care must always be taken while carrying out the risk-related activity.

PERFORMANCE AND LIMITATIONS OF USE – These products have been tested in accordance with AS 2210.3:2019 for the types of protection defined on the product by the marking codes explained above. However, always ensure that the footwear is suitable for the intended end use.

FITTING, SIZING – To put on and take off shoes or boots, always fully undo the fastening systems. Only wear footwear of a suitable size. Shoes that are either too loose or too tight will restrict movement and will not provide the optimum level of protection. The shoe size is always clearly marked on our shoes.

COMPATIBILITY – To optimize protection, in some instances it may be necessary to use this footwear with additional PPE such as protective trousers or over gaiters. In this case, before carrying out the risk related activity, consult your supplier to ensure that all your protective products are compatible and suitable for your application.

SOCKS & COMFORT – Wear Bata Industrials socks, change your socks regularly and, in case of perspiration, take alternating hot and cold baths. Use soap sparingly. Change shoes regularly: leather is a natural product and should be allowed to rest.

Check www.bataindustrials.com.au to contact our shoe advisor or to view all the standards that apply on each of our shoes. Risk analysis is always the responsibility of the prevention advisor. The prevention advisor, in consultation with the hierarchal line, prepares the advice whereby the employer undertakes the necessary actions.



NSW Master Distributor

☎ 02 9603 3824 🌐 privatebrands.com.au
✉ enquiries@privatebrands.com.au

21 Broadhurst Rd, Ingleburn, NSW 2565



WA / NT Master Distributor

☎ 08 9331 1141 🌐 trubands.com.au
✉ orders@trubands.com.au

6 Hathor Way, Bibra Lake WA 6163