



# RESPIRATORY PROTECTIVE EQUIPMENT



**ALLENS** Industrial  
Products  
PTY LTD

SINCE 1917  
*Safety Style*  
with



## More Safety, More Comfort

**Easy Breathing**

**High Protection**

**Cost Effective**

Breath Responsive PAPR provides clean air filtered by a fan as the wearer breathes.

Pressure inside the facepiece is kept positive to provide a higher safety.

Even if airtightness breaks, the fan will keep running to lower the risk of breathing in particles.

**Safety**



Filter lasts longer than Reusable Respirator.

### Switchless

**ON** The system starts automatically when you breathe.

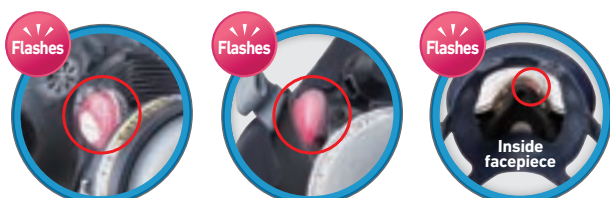
**OFF** The system stops automatically in 5 seconds after doffing.

### Cordless

There is no battery connection cable, which simplifies preparation when donning the mask and does not disturb your work.

### Filter Replacement Indicator

An LED flashes when it is time to replace the filter.

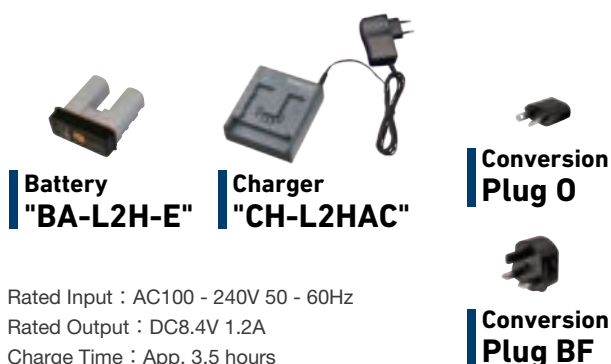


**Sync09**

**Sync11**

**Sync01**

### Battery and Charger



### Battery Life Indicator

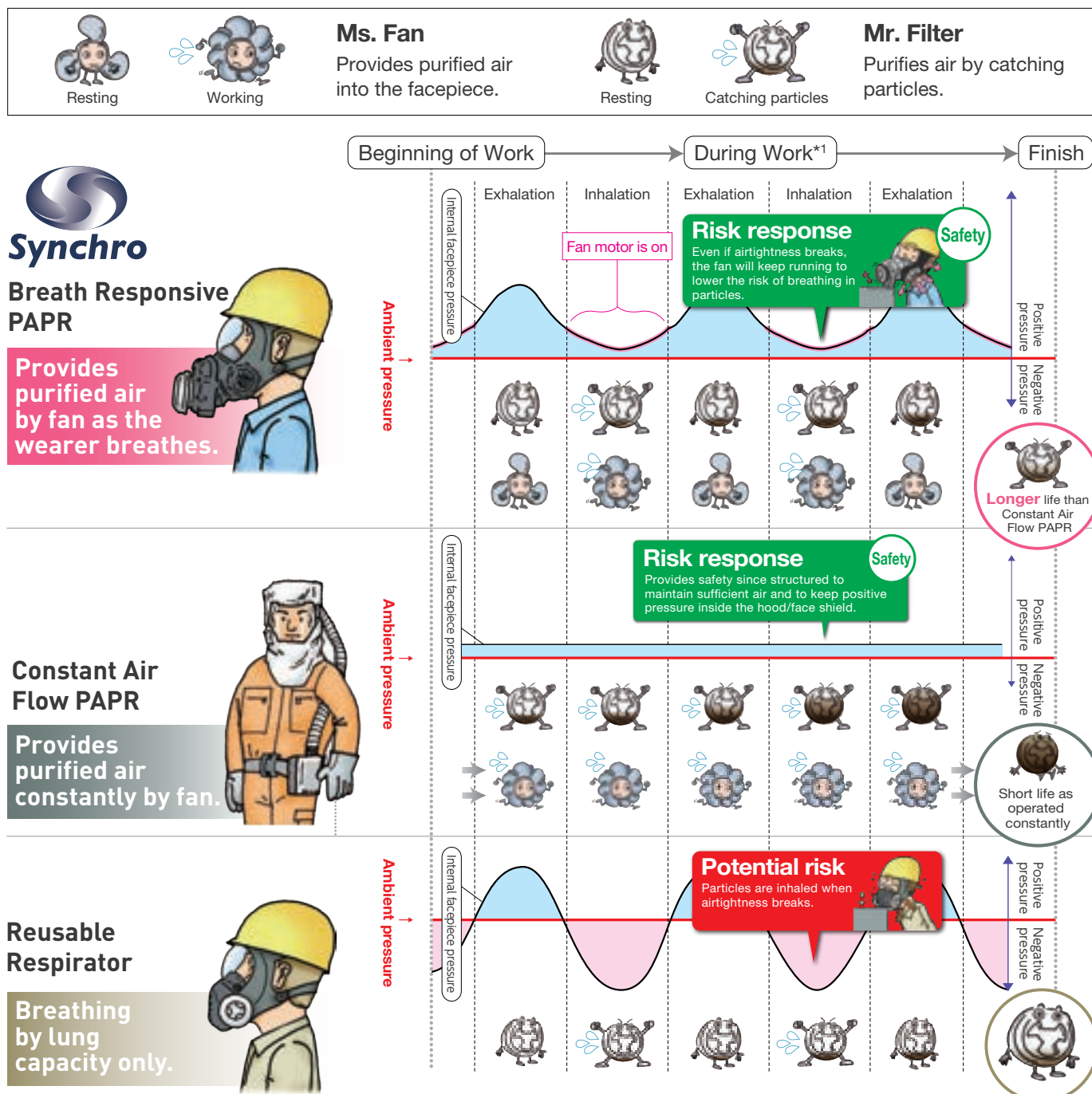
The Battery life indicators (2LEDs) will inform the remained battery life in order to make it easier to check the operating time. After the battery is first attached to the fan unit, the battery life indicators (2LEDs) will light for approximately 30 seconds.



Battery life indicator patterns (2LEDs)	State	Remaining voltage
■ ■	Full charge	At least 8.0 V
■ ■	—	7.9 - 7.4 V
■ ■	Low charge	7.3 - 7.0 V
□ ■	Low charge	Less than 6.9 V
■ □	Alternately lights	The fan is locked.

■ : Lit ■ : Flashing □ : Not lit

## Comparison with Breath Responsive PAPR "Synchro", Constant Air Flow PAPR and Reusable Respirator



\*1 The graph only illustrates pressure difference. PAPR may fail to keep positive pressure when heavily inhaled.

### Colour Filter Type

### Application

Brown	A	Organic gases and vapours (boiling point > 65°C)
Grey	B	Inorganic gases and vapours
Yellow	E	Sulphur dioxide and other acidic gases and vapours
Green	K	Ammonia and organic ammonia derivatives
Brown	AX	Organic gases and vapours (boiling point ≤ 65°C)
White	P	Particles

### Class Type of Gas Filters (A, B, E and K\*1)

Class	Max. Permissible Concentration <sup>2</sup>
1	1,000 ppm (0.1 vol.%)
2	5,000 ppm (0.5 vol.%)
3	10,000 ppm (1.0 vol.%)

### Class Type of Particle Filters

Class	Filter Efficiency	Maximum Filter Penetration (%)
P1	Low	20
P2	Medium	6
P3	High	0.05

\*1 AX filter is not classified.

\*2 Modifications may be possible due to national regulations.



## SyncØ9 NEW

EN 12942 : 1998+A2 : 2008

AS/NZS 1716 : 2012

IEC 60529 : 2001 IP65 rated

**Extraordinary Wide View  
PAPR with Communication**



## Synchro

### Breath Responsive PAPR

**With Voice Amplifier**  
Even if you wear the mask,  
it is possible to communicate  
clearly.

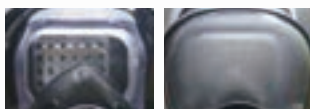
TPE Facepiece Light Weight 735g (M)  
(Includes; Fan unit, Filter **VP3** and Battery)

Inner Mask to  
Remove & Attach Easily

6-point Head  
Harness

New Widest Polycarbonate  
3D-curve Visor  
( Inside:Anti-fog Coated  
Outside:Anti-scratch Coated )

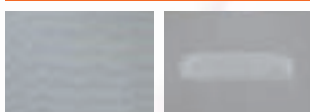
#### Anti-fog Coated



Coated Lens

Uncoated Lens

#### Anti-scratch Coated



Coated Lens

Uncoated Lens



**Test Device**  
Test Condition:  
Abrading 400 times  
using steel wool  
with the weight of 2,000 gf.



Easy Adjustment  
with Slide Bar

Speech Diaphragm

### Estimated Operating Time

Product Name	VP3	VA1P3	VABE1P3
<b>SyncØ9</b>	≥ 11.5h	≥ 9.5h	≥ 8.5h

### Order Information

Product Name	Size	Product Code	Weight <sup>*1</sup>	Packaging Unit
<b>SyncØ9 VP3</b>	M	05STS032	≤ 735g	1 pc / box
	L	05STS033	≤ 740g	

<sup>\*1</sup> Includes; Facepiece, Fan unit, Filter **VP3** and Battery

Picture shows "SyncØ9VP3" and gas filter "VABE1P3".

Washable



Facepiece



**Please remove  
the fan unit**  
when washing  
the facepiece.

# Sync11 NEW

EN 12942 : 1998+A2 : 2008

AS/NZS 1716 : 2012

IEC 60529 : 2001 IP63 rated

**Half Mask PAPR**



**Synchro**

**Breath Responsive PAPR**



## Estimated Operating Time

Product Name	VP3	VA1P3	VABE1P3
<b>Sync11</b>	≥ 14.5h	≥ 11.0h	≥ 11.0h

## Order Information

Product Name	Product Code	Weight <sup>*1</sup>	Packaging Unit
<b>Sync11VP3</b>	05STS002	≤ 450g	1 pc / box

\*1 Includes; Facepiece unit, Filter **VP3** and Battery

Picture shows " Sync11 VP3 ".

# SyncØ1



**Synchro**

**Breath Responsive PAPR**

EN 12942 : 1998+A2 : 2008

AS/NZS 1716 : 2012

IEC 60529 : 2001 IP65 rated

Full Face Mask, PAPR

TPE Facepiece Light Weight 755g (M)  
(Includes;Fan unit, Filter VP3 and Battery)

Wide Polycarbonate  
3D-curve Visor  
(Anti-scratch coated)  
EN 166 1B



**For Asbestos  
Application!**

Possible to check the airflow  
with airflow tester included  
in the starter kit.



6-point Head Harness

Speech Diaphragm

Picture shows "SyncØ1VP3".

### Estimated Operating Time

Product Name	VP3	VA1P3	VABE1P3
SyncØ1	≥ 9.0h	≥ 8.0h	≥ 7.5h

### Order Information

Product Name	Size	Product Code	Weight*1	Packaging Unit
SyncØ1VP3	M	05STS003	App. 755 g	1 pc / box
	L	05STS004	App. 770 g	

\*1 Includes;Facepiece, Fan unit, Filter VP3 and Battery

Washable



Facepiece



**Please  
remove  
the fan unit**  
when washing  
the facepiece.



## Filter Type & Colour Code

Colour	Filter Type	Application
Brown	A	Organic gases and vapours (boiling point > 65°C)
Grey	B	Inorganic gases and vapours
Yellow	E	Sulphur dioxide and other acidic gases and vapours
Green	K	Ammonia and organic ammonia derivatives
Brown	AX	Organic gases and vapours (boiling point ≤ 65°C)
White	P	Particles

### ■ Class Type of Gas Filters (A, B, E and K\*1)

Class	Max. Permissible Concentration <sup>*2</sup>
1	500 ppm (0.05 vol.%)
2	1,000 ppm (0.1 vol.%)
3	5,000 ppm (0.5 vol.%)

\*1 AX filter is not classified.

\*2 Modifications may be possible due to national regulations.

### ■ Classification of Complete Devices

Classification of Complete Device			Maximum Inward Leakage (%)		Maximum Particle Filter Penetration (%)
Class	Gas Filter Type and Class	Particle Filter	Power		
			ON	OFF	
TM1	A1, 2 or 3 B1, 2 or 3	P	5	5	5
TM2	E1, 2 or 3 K1, 2 or 3		0.5	1	0.5
TM3	AX		0.05	0.1	0.05

## Filter Application

Series	V		
Type	Particle Filter	Combined Filters	
Product Name	<b>VP3</b>	<b>VA1P3</b>	<b>VABE1P3</b>
Standard	EN 12942:1998+A2:2008 AS/NZS 1716:2012*1		
Product Code	40350-05STS031	40250-05STS026	40251-05STS027
Dia. [mm]	96	110	110
Height [mm]	28	62	65
Weight [g]	≤ 32	≤ 165	≤ 205
Packing Unit [pcs / box]	10	20	20
Appearance			
Filter Type & Colour Code		<b>A1</b>	<b>A1</b>
			<b>B1</b>
			<b>E1</b>
	<b>P R SL<sup>*2</sup></b>	<b>P R SL<sup>*2</sup></b>	<b>P R SL<sup>*2</sup></b>
Compatible Mask	 <b>Sync09</b> see Page 3	 <b>Sync01</b> see Page 5	 <b>Sync11</b> see Page 4

\*1 Exclude; **Sync01VABE1P3**. This filter not suitable for use with Sync01 unit

\*2 R :If the particle filter part of the combined filter is re-usable.  
SL:For use against solid and water based aerosols only.

# PAPR: Powered Air Purifying Respirator



## Starter Kit

### SyncØ9VP3



#### Order Information

Product Name	Size	Product Code	Weight <sup>1</sup>	Packaging Unit
SyncØ9VP3	M	05STS032	≤ 735 g	1 pc / box
	L	05STS033	≤ 740 g	

### Sync11VP3



#### Order Information

Product Name	Product Code	Weight <sup>1</sup>	Packaging Unit
Sync11VP3	05STS002	≤ 450 g	1 pc / box

### SyncØ1VP3



#### Order Information

Product Name	Size	Product Code	Weight <sup>1</sup>	Packaging Unit
SyncØ1VP3	M	05STS003	App. 755 g	1 pc / box
	L	05STS004	App. 770 g	



## HALF MASK RESPIRATOR KITS



Kits are supplied in a Plastic Clip lock container to suit various tasks as shown below.  
Each kit comes with the applicable masks and filters.

### APPLICATIONS

#### PAINT SPRAY / PESTICIDE -

- Paint Spray
- Pesticides
- Chemical Handling
- Agriculture
- Mining

### EXAMPLES

Gluing, spraying, de-greasing, dry cleaning, fibre glassing, gel coating, painting, printing, organic solvents, pesticide spraying, refineries, body shop

(Not suitable for 2pak paint applications)

05STS040	Medium
----------	--------

05STS041	Large
----------	-------

#### MULTI-GAS / VAPOUR -

- Ammonia
- Chlorine
- Hydrogen Chloride
- Sulfur Dioxide
- Formaldehyde
- Solvents (boiling points >65° C)

Chlorine sterilization of water; chemical manufacture; hydrogen chloride/ chlorinated organic chemical manufacture, steel pickling, SO<sup>2</sup> casting metals, bleach manufacture, manufacture of sulfuric acid, fertilizer manufacture, metal cleaning, petroleum refining, NH<sup>3</sup>/ refrigeration, explosives, low boiling point amines, de-greasing, paint vapour, electroplating, etching, printing, textiles, waste processing, aircraft maintenance, refineries

05STS044	Medium
----------	--------

05STS045	Large
----------	-------

#### FINE DUST PARTICULATE, ASBESTOS & SILICA

- Asbestos
- Silica (not sand blasting)
- Inorganic Arsenic
- Lead
- Sweeping
- Pharmaceutical Manufacturing

Asbestos removal, silica dust, bagging, cellulose (paper dust), coal dust, concrete dust, construction, cutting, drilling, floor sanding dust, glass wool, grinding, milling, mist particulate, mould remedial work, packhouse dust, building insulation, plaster of paris, poultry dander, sanding, sodium hydroxide (caustic soda), stone quarry, wood dust

05STS042	Medium
----------	--------

05STS043	Large
----------	-------

# FS01

**NEW**

EN 136 : 1998 Class 2

AS/NZS 1716 : 2012

**Acknowledge the Unknown RISK**

Widest Polycarbonate 3D-curve Visor  
(Inside:Anti-fog Coated  
Outside:Anti-scratch Coated )  
EN 166 1B

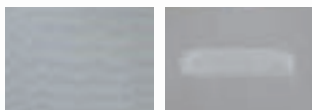
**Anti-fog Coated**



Coated Lens

Uncoated Lens

**Anti-scratch Coated**



Coated Lens

Uncoated Lens



**Test Device**

Test Condition:  
Abrading 400 times  
using steel wool  
with the weight of 2,000 gf.

**Speech Diaphragm**

Designed to use with a  
Safety Helmet and Coveralls

New TPE Facepiece  
Approved to  
EN 136:1998 Class 2  
Excellent Light  
Weight 370g

6-point Head  
Harness

Inner Mask  
to Remove  
& Attach Easily

Easy Adjustment  
with Slide Bar

**More Safety!**

**Twist Lock Connector**



Filter Lock Application  
(Only CP-P3R)

**More Vision!**



Back Side of CP-P3R Filter

The off-set connector  
supports the wide  
vision(Only CP-P3R).

## Order Information

Product Name	Size	Product Code	Weight (Without filters)	Packing Unit
<b>FS01</b>	S	06STS008	≤ 415g	1 pc / box
	M	06STS009		
	L	06STS010		

# CF01

EN 136 : 1998 Class 1

AS/NZS 1716 : 2012

**Good looking, Great fit**



6-Point Head Harness

Designed to use  
with a safety  
Helmet and Coveralls

Polycarbonate 3D-curve Visor  
(Anti-scratch Coated)  
EN 166 1B

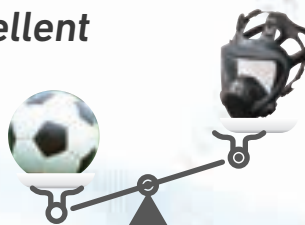
TPE Facepiece  
Ultimate Light Weight 360g

Speech Diaphragm

Twist Connector

## TPE Facepiece Excellent Light Weight 360g!!

Lighter than a football (410-450g).  
Almost half the weight of other  
full face masks.



### Order Information

Product Name	Size	Product Code	Weight (Without filters)	Packing Unit
<b>CF01</b>	S	05STS011		
	M	05STS012	≤ 360 g	1 pc / box
	L	05STS013		



# RS01S

EN 140 : 1998  
AS/NZS 1716 : 2012

Everyone looks for  
"Simple Silicone"



Drop Down Head Harness  
No need to remove safety helmets when lowering or raising the half mask.

Soft and Durable  
Silicone Facepiece

Twist Connector

Three Sizes  
"S, M, L" Available

Light Weight 140g

## Order Information

Product Name	Size	Product Code	Weight (Without filters)	Packaging Unit
RS01S	S	06STS014	≤ 140 g	1 pc / box
	M	06STS015		
	L	06STS016		

# RS01

EN 140 : 1998

AS/NZS 1716 : 2012

**Fatigue-free,  
Care-free,  
Stress-free**

Embossed Surface  
(TPE Facepiece)

Twist Connector

Drop Down Head Harness

**Extremely  
Light Weight  
105g!!**

Lighter than 3 golf balls  
(App. 138g).

One of the lightest  
facepieces in the PPE  
market.

With particle filters **P3R**  
attached still weighs only  
150g.



## Order Information

Product Name	Size	Product Code	Weight (Without filters)	Packing Unit
RS01	M	05STS017	≤ 105 g	1 pc / box
	L	05STS018		

# RX01

EN 140 : 1998

AS/NZS 1716 : 2012

**Communication is  
another Protective Factor**

Twist Connector

4-Point Head Harness

Specially Designed  
Silicone Facepiece

Speech Diaphragm

## Order Information

Product Name	Size	Product Code	Weight (Without filters)	Packing Unit
RX01	M	05STS000	≤ 190 g	1 pc / box
	L	05STS001		

# Reusable Respirator



## Filter Type & Colour Code

Colour	Filter Type	Application
Brown	A	Organic gases and vapours (boiling point > 65°C)
Grey	B	Inorganic gases and vapours
Yellow	E	Sulphur dioxide and other acidic gases and vapours
Green	K	Ammonia and organic ammonia derivatives
Brown	AX	Organic gases and vapours (boiling point ≤ 65°C)
White	P	Particles

### Class Type of Gas Filters (A, B, E and K\*)

Class	Max. Permissible Concentration <sup>2</sup>
1	1,000 ppm (0.1 vol.%)
2	5,000 ppm (0.5 vol.%)
3	10,000 ppm (1.0 vol.%)

### Class Type of Particle Filters

Class	Filter Efficiency	Maximum Filter Penetration (%)
P1	Low	20
P2	Medium	6
P3	High	0.05

\*1 AX filter is not classified.

\*2 Modifications may be possible due to national regulations.

## Filter Application

Series	CP	CA								
Type	Particle Filters			Combined Filters (+Gas Filters)		Gas Filters				
Product Name	CP-P3R	P3R	P2R	P3RC	P2RC	CA-A1	CA-A2	CA-K1	CA-AX	CA-ABEK1
Standard	EN 143:2000 AS/NZS 1716:2012			EN 14387:2004 AS/NZS 1716:2012						
Product Code	05STS028	05STS030	05STS029	05STS025	05STS024	05STS019	05STS020	05STS022	05STS021	05STS023
Dia.[mm]	77	77	77	86	86	82	82	82	82	82
Height[mm]	26	21	21	+14.5*2	+14.5*2	24	34	34	44	34
Weight[g]	≤27	≤22	≤22	≤20	≤20	≤55	≤80	≤125	≤130	≤100
Packing Unit [pcs / box]	20	20	20	28	28	20	20	20	10	20
Appearance										
Filter Type & Colour Code						A1	A2	K1	AX	A1 B1 E1 K1
	P3 R*3	P3 R*3	P2 R*3	P3 R*3	P2 R*3					
Compatible Masks										
	FS01 See Page 9	FS01 See Page 9	CF01 See Page 10	RS01S See Page 11	RS01 See Page 12					

\*1 P3RC and P2RC particle filters can only be used when attaching to gas filters CA Series, and used as combined filters.

\*2 "+" shows the additional height when P3RC/P2RC is attached to each gas filters CA Series.

\*3 R :If the filter is re-usable respectively.

NR:If the filter is limited to single shift use only.

When attaching P3RC or P2RC particle filters to gas filter CA-AX, since AX filter is only for single use, the filter type of P3RC or P2RC will be P3NR or P2NR.



Attach **P3RC/P2RC** to gas filters of **CA Series** if atmospheric contaminants contain gas with solid and/or liquid particles.



## Water and Oil Repellent Effects

Prevent penetration from solid and/or liquid particles!

Water Repellent

Oil Repellent

**LOW  
PROFILE**

77mm

21mm

Particle Filters VP3/CP-P3R/P3R/P2R/P3RC/P2RC



● Specifications are subject to change without notice.

● The actual colour may vary from those shown.

## Contact us

### Brisbane Branch

40-44 Musgrave Rd  
Coopers Plain, QLD 4108

Phone: (07) 3255 6455  
Fax: (07) 3255 5568  
[onlineorders@allensindustrial.com.au](mailto:onlineorders@allensindustrial.com.au)

Office Hours:  
7am to 5pm - Monday to Friday

Showroom Hours:  
7.30am to 5pm - Monday to Friday

### Sydney Branch

3 Metters Pl Wetherill Park  
Sydney NSW 2164

Phone: (02) 8072 4162  
[services@asbestosremovalproducts.com.au](mailto:services@asbestosremovalproducts.com.au)

Office Hours:  
7am to 5pm - Monday to Friday

Showroom Hours:  
7.30am to 5pm - Monday to Friday

### Melbourne Branch

72 North View Drive  
Sunshine West, VIC 3020

Phone: (03) 9081 0172  
[services@asbestosremovalproducts.com.au](mailto:services@asbestosremovalproducts.com.au)

Office Hours:  
7.30am to 4.30pm - Monday to Friday

Showroom Hours:  
7.30am to 4.30pm - Monday to Friday

